

Hazelwood House



DESCRIPTION

Set in a secluded area of Tytherington Business Village, Hazelwood House is a high quality office development totalling 14,887 sq ft which is ideal for established businesses looking for their next HQ or regional base.

The self-contained, two story property is of grade A specification and benefits from an existing fit-out consisting of glazed meeting rooms and private office suites, but can be altered to suit your needs.

GROUND & FIRST FLOOR

GROUND FLOOR	7,287 SQ FT	677 SQ M
Car parking Up to 28 spaces available		
FIRST FLOOR	7,600 SQ FT	706 SQ M
Car parking Up to 28 spaces available		
TOTAL	14,887 SQ FT	1,383 SQ M

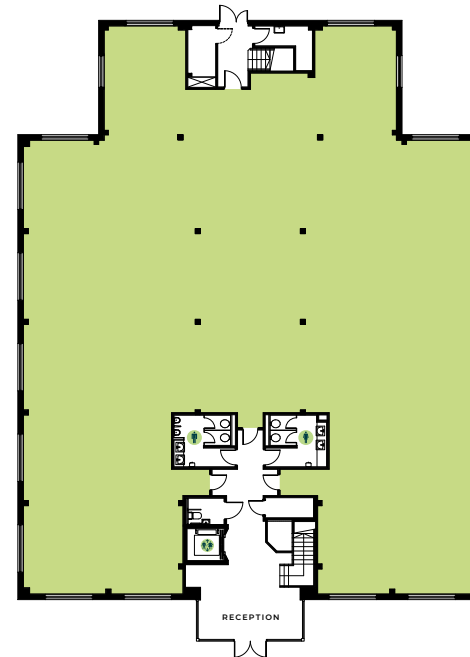
For full details call us on
01625 588 200 or email
orbit@emerson.co.uk

orbit-developments.co.uk
tytheringtonbusinessvillage.co.uk

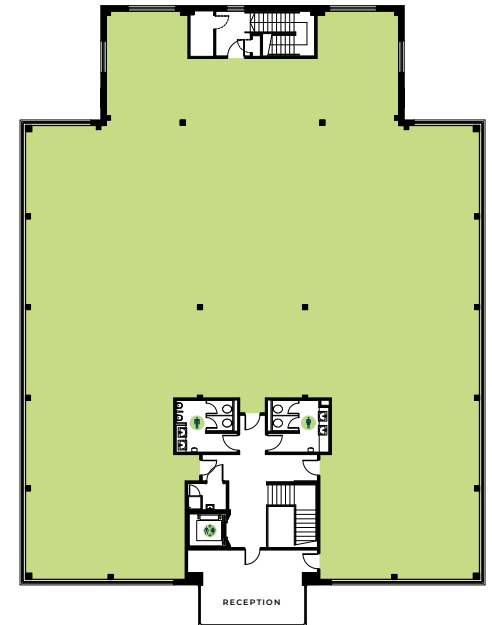
DISCLAIMER: These Particulars are believed to be correct at time of going to Press, but the Developer reserves the right to change the scheme in the future. However, the Vendors/Lessors and Agents of this property give notice that: (1) These Particulars are intended as a general outline only, for the guidance of prospective purchasers or tenants, and do not constitute the whole or any part of an offer or contract. (2) They cannot guarantee the accuracy of any description, dimension or other details contained in these Particulars and prospective purchasers or tenants should not rely on them as statements of fact or representation, but must satisfy themselves as to the accuracy of such details. (3) No employee of the Agents has any authority to make or give any representation or warranty, or enter into any contract whatsoever in relation to the property. (4) Prices and rents quoted in these Particulars may be subject to VAT in addition. October 2019.

FLOOR PLANS

Ground Floor



First Floor



Hazelwood House



TYTHERINGTON
BUSINESS
VILLAGE

