

Elmwood Court



DESCRIPTION

Elmwood Court is a well-presented property that provides a range of small suites which are available on all-inclusive packages and ideal for growing and start-up businesses looking for flexible workspace in Macclesfield and East Cheshire.

PART GROUND FLOOR & FIRST FLOOR

GROUND FLOOR - SUITE A	355 SQ FT	33 SQ M
FIRST FLOOR - SUITE D	581 SQ FT	54 SQ M
FIRST FLOOR - SUITE E	249 SQ FT	23 SQ M
FIRST FLOOR - SUITE F	1,962 SQ FT	182 SQ M
WHOLE FIRST FLOOR	3,191 SQ FT	296 SQ M

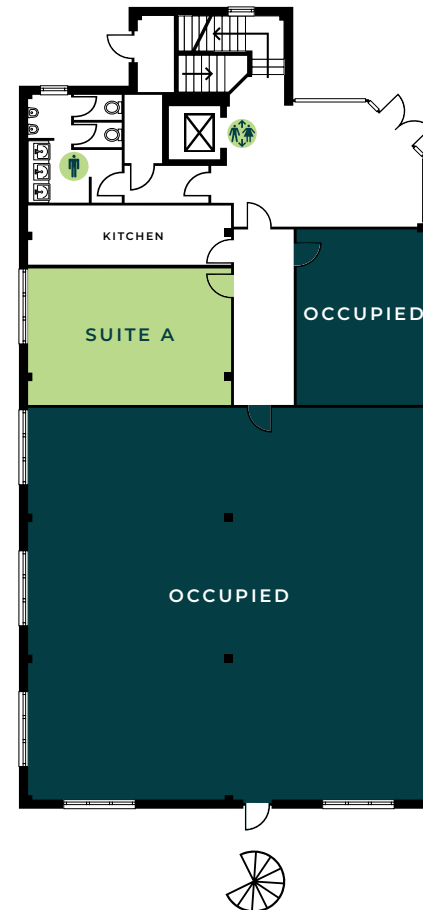
For full details call us on
01625 588 200 or email
orbit@emerson.co.uk

orbit-developments.co.uk
tytheringtonbusinessvillage.co.uk

DISCLAIMER: These Particulars are believed to be correct at time of going to Press, but the Developer reserves the right to change the scheme in the future. However, the Vendors/Lessors and Agents of this property give notice that: (1) These Particulars are intended as a general outline only, for the guidance of prospective purchasers or tenants, and do not constitute the whole or any part of an offer or contract. (2) They cannot guarantee the accuracy of any description, dimension or other details contained in these Particulars and prospective purchasers or tenants should not rely on them as statements of fact or representation, but must satisfy themselves as to the accuracy of such details. (3) No employee of the Agents has any authority to make or give any representation or warranty, or enter into any contract whatsoever in relation to the property. (4) Prices and rents quoted in these Particulars maybe subject to VAT in addition. NOV 2019

FLOOR PLANS

Ground Floor



First Floor

