

Cobden House Floor Plan

4,257 – 13,177 sq ft

Cobden House provides premium office space in the thriving city centre of Manchester. The building fronts Piccadilly Gardens, one of the city's well known and desirable areas for business.

The building is full of character and presents a great opportunity for businesses looking to thrive in a vibrant city centre.

The space is just a minutes walk from two of Metrolink's main tram stops and is directly adjacent to Piccadilly Gardens' lively bus terminal.

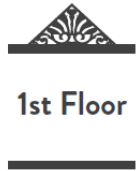
A direct train service to London Euston reaches the capital in just over two hours and Manchester Airport is just a short journey away where flights leave regularly to more than 200 destinations worldwide.

For more information on this property:

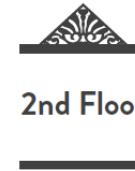
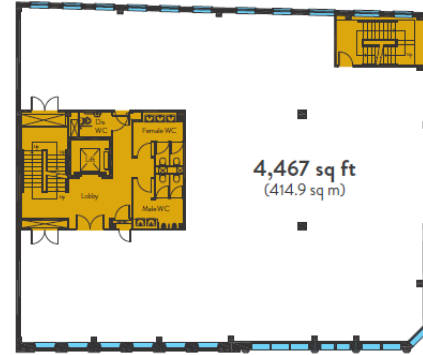
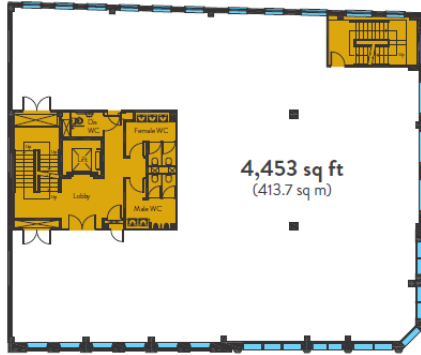
📞 **01625 588200**

🌐 www.orbit-developments.co.uk

DISCLAIMER: These Particulars are believed to be correct at time of going to Press, but the Developer reserves the right to change the scheme in the future. However, the Vendors / Lessors and Agents of this property give notice that : (1) These Particulars are intended as a general outline only, for the guidance of prospective purchasers or tenants, and do not constitute the whole or any part of an offer or contract. (2) They cannot guarantee the accuracy of any description, dimension or other details contained in these Particulars and prospective purchasers or tenants should not rely on them as statements of fact or representation, but must satisfy themselves as to the accuracy of such details. (3) No employee of the Agents has any authority to make or give any representation or warranty, or enter into any contract whatsoever in relation to the property.

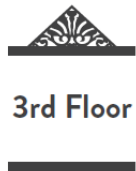


1st Floor

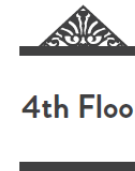
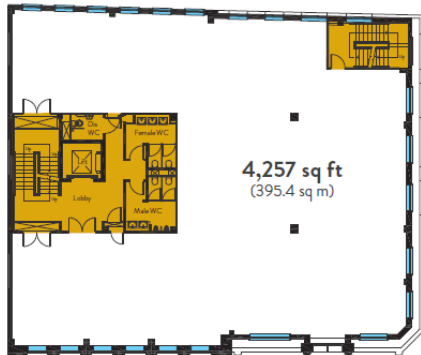


2nd Floor

Single or multiple floors available to lease



3rd Floor



4th Floor