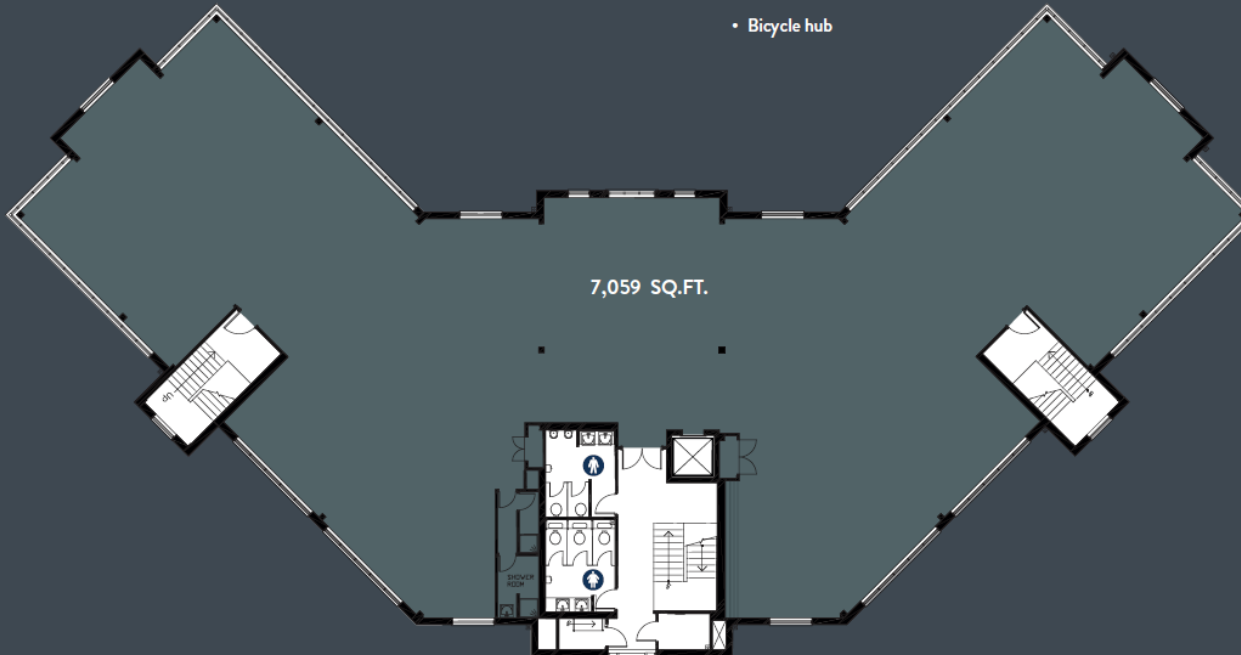


# SECOND FLOOR - 7,059 SQ.FT.

The second floor workspace presents a fantastic opportunity for you to create a tailor-made environment for your customers and staff in our open plan and easily adaptable workspace.

The workspace benefits from the following specification:

- Fully air-conditioned
- Full access raised floors
- Suspended ceilings with LG3 lighting
- On-site parking - ratio 1:227 sq.ft.
- On-site CCTV with 24-hour access via swipe card
- Shower facilities
- Bicycle hub



**Orbit**  
Developments

## Riverside Court Second Floor 7,059 sq ft

Riverside Court is an impressive three storey office building with private onsite car parking.

The building is located within Riverside Business Park on the edge of Wilmslow town centre, just off the A34 bypass. This central location benefits from excellent connectivity by road, rail (Wilmslow train station) and air (Manchester Airport).

Finished to a high standard throughout the property, Riverside Court offers a range of specifications, such as full air-conditioning throughout, suspended ceilings, 24 hour monitored access control system and much more.

For more information on this property:

📞 **01625 588200**

🌐 [www.orbit-developments.co.uk](http://www.orbit-developments.co.uk)

**DISCLAIMER:** These Particulars are believed to be correct at time of going to Press, but the Developer reserves the right to change the scheme in the future. However, the Vendors / Lessors and Agents of this property give notice that : (1) These Particulars are intended as a general outline only, for the guidance of prospective purchasers or tenants, and do not constitute the whole or any part of an offer or contract. (2) They cannot guarantee the accuracy of any description, dimension or other details contained in these Particulars and prospective purchasers or tenants should not rely on them as statements of fact or representation, but must satisfy themselves as to the accuracy of such details. (3) No employee of the Agents has any authority to make or give any representation or warranty, or enter into any contract whatsoever in relation to the property.