

Queens Court Second Floor Floor Plan

Queens Court is a stunning Grade II listed building, situated in the heart of Alderley Edge.

Offering striking features and set within landscaped grounds, Queens Court presents a unique opportunity to locate your business within Cheshire's Golden Triangle.

Inkeeping with its former use as a railway hotel in the 1800s, Orbit Developments have restored and refurbished the property into a high-quality office space.

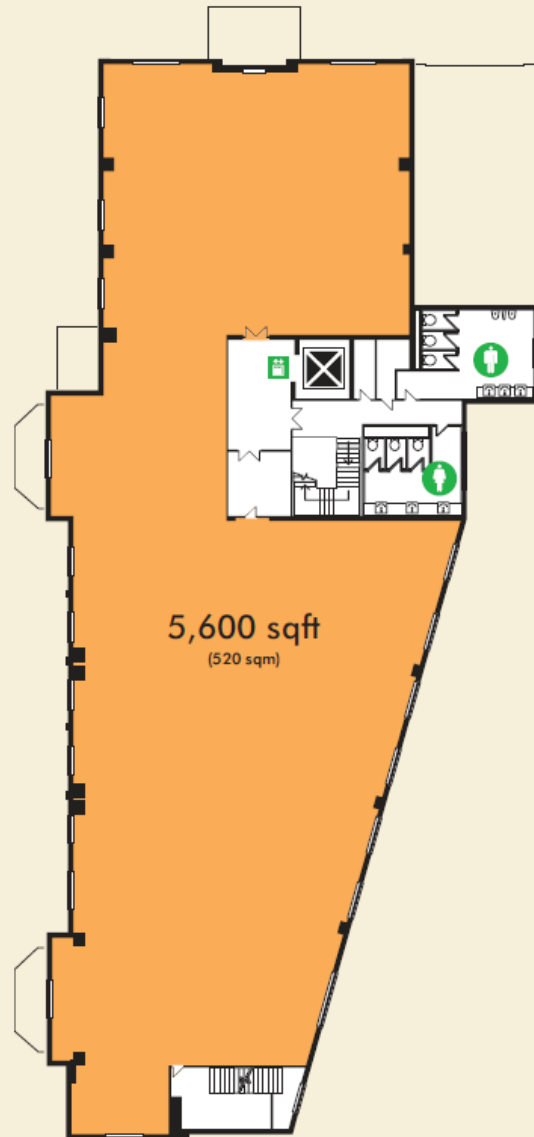
Queens Court has received awards for the restoration and refurbishment including 'The Civic Trust Commendation Award'

For more information on this property:

01625 588200

 www.orbit-developments.co.uk

DISCLAIMER: These Particulars are believed to be correct at time of going to Press, but the Developer reserves the right to change the scheme in the future. However, the Vendors / Lessors and Agents of this property give notice that : (1) These Particulars are intended as a general outline only, for the guidance of prospective purchasers or tenants, and do not constitute the whole or any part of an offer or contract. (2) They cannot guarantee the accuracy of any description, dimension or other details contained in these Particulars and prospective purchasers or tenants should not rely on them as statements of fact or representation, but must satisfy themselves as to the accuracy of such details. (3) No employee of the Agents has any authority to make or give any representation or warranty, or enter into any contract whatsoever in relation to the property.



SECOND FLOOR ACCOMMODATION

- 5,600 sqft (520 sqm)
- Suspended ceilings
- VDU compliant lighting
- Gas central heating
- Conference/meeting room facilities available
- On-site parking available
- On-site building manager