

PARKWAY 1

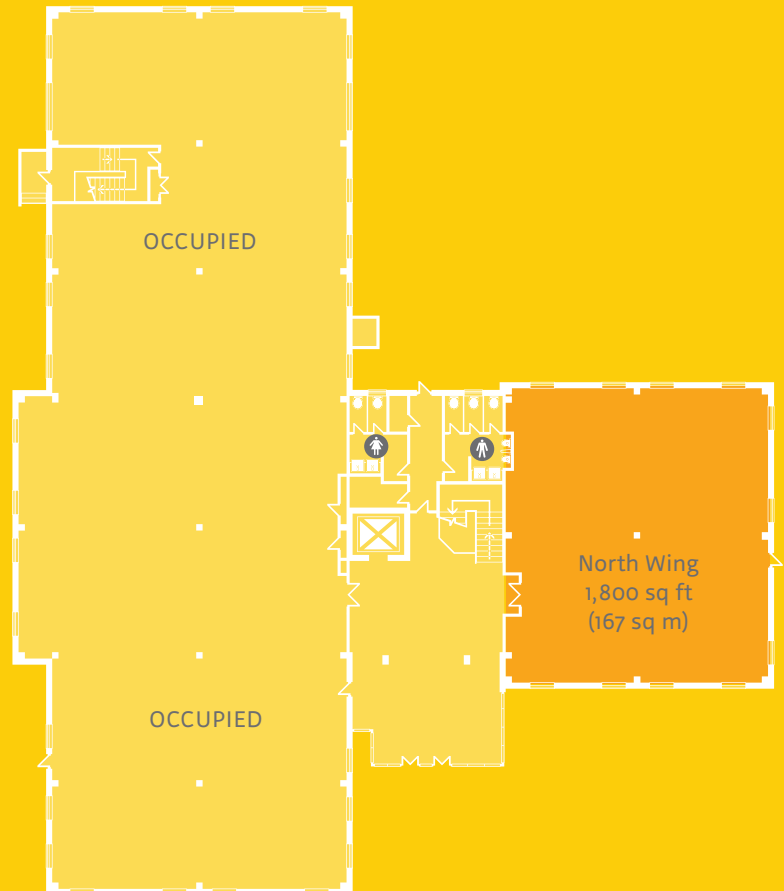
Ground floor

Specification

- VRV air-conditioning system
- Full accessed raised floors
- Suspended ceilings with LG7 lighting
- Double glazed opening windows with solar reflective film
- Access available 24/7
- On-site shower and bike facilities

Availability

North Wing 1,800 sq ft (167 sq m)



CONTACT THE PARK WAY



For more information or to arrange a viewing
Tel: 01625 588 200
Email: orbit@emerson.co.uk

Orbit Developments,
Emerson House,
Heyes Lane,
Alderley Edge,
Cheshire SK9 7LF

Orbit
Developments

www.orbit-developments.co.uk

SAT NAV: M14 7LU

www.theparkway.co.uk



DISCLAIMER: Whilst the statements contained in these particulars are given in good faith and as a general guide to the property, they do not form any part of an offer or contract. Neither the Lessor or their Agents can accept responsibility for them. Interested parties must satisfy themselves by inspection, or otherwise, as to the correctness of these particulars. (0919)