

Park Square Floor Plans

11,765 – 22,500 sq ft

Park Square has recently undergone a major refurbishment that now provides a high quality office building with possibly South Manchester's largest floor plate.

Park Square offers some unique facilities which include an onsite restaurant, a range of meeting spaces for up to 100 people, sports hall, bowling green and our unique 9 hole golf course.

Currently available are the 2nd and 3rd floors totalling 22,500 sqft and 11,765 sqft respectively.

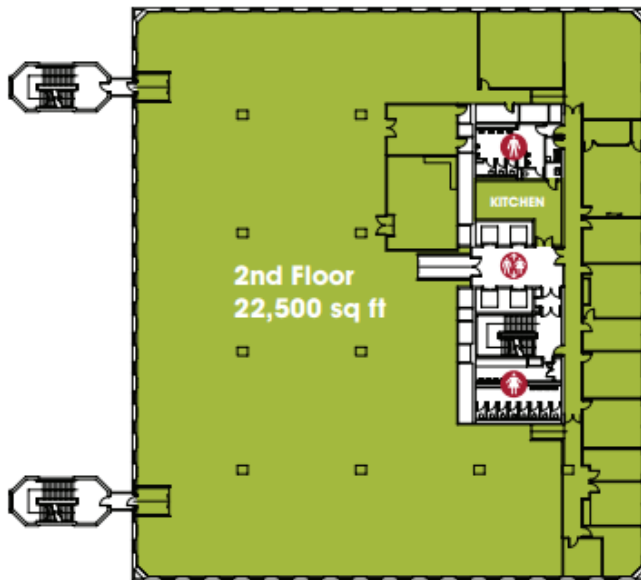
The second floor provides one of the largest single floorplates in South Manchester and both suites benefit from on-site parking with a ratio of 1:250 sqft.

For more information on this property:

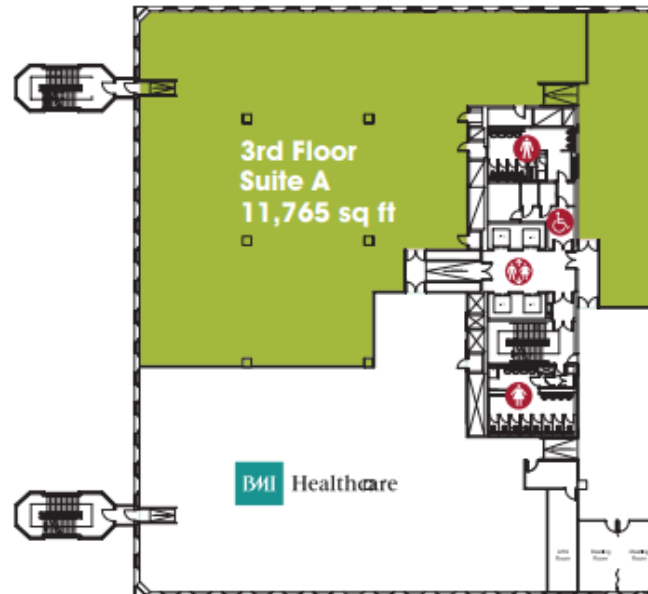
📞 **01625 588200**

🌐 www.orbit-developments.co.uk

2nd floor



3rd floor



DISCLAIMER: These Particulars are believed to be correct at time of going to Press, but the Developer reserves the right to change the scheme in the future. However, the Vendors / Lessors and Agents of this property give notice that : (1) These Particulars are intended as a general outline only, for the guidance of prospective purchasers or tenants, and do not constitute the whole or any part of an offer or contract. (2) They cannot guarantee the accuracy of any description, dimension or other details contained in these Particulars and prospective purchasers or tenants should not rely on them as statements of fact or representation, but must satisfy themselves as to the accuracy of such details. (3) No employee of the Agents has any authority to make or give any representation or warranty, or enter into any contract whatsoever in relation to the property.