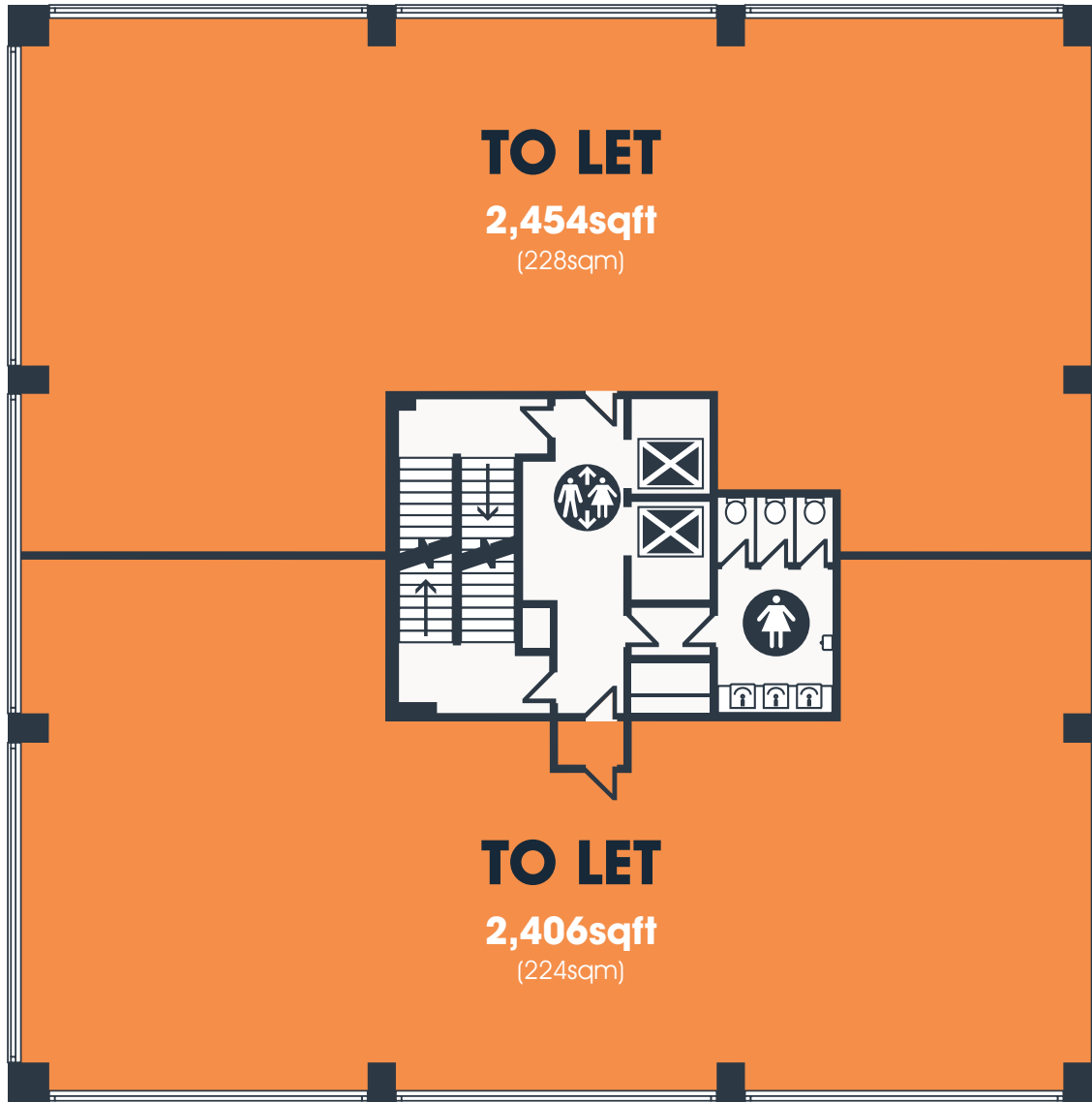


# 1 CITY APPROACH



## seventh floor



high quality comfort cooled office suites

total available **to let**  
**4,860sqft** (452sqm)

This floor layout may be sub-divided to provide a bespoke office area suitable for your requirements

NB: This floor layout is not drawn to scale and is supplied for illustrative / guidance purposes only. Male / Female toilets are located on alternate floors.

Now connected to:



for superfast affordable high-speed broadband

**Orbit**  
Developments  
A MEMBER OF THE EMERSON GROUP

For further information:

Tel: **01625 588200**

Fax: 01625 585791

Web: [www.orbit-developments.co.uk](http://www.orbit-developments.co.uk)

Emerson House Heyes Lane Alderley Edge Cheshire SK9 7LF

26 KING STREET MANCHESTER M2 6AY  
**Edwards & Co**  
0161 833 9991  
[www.edwardsandco.com](http://www.edwardsandco.com)

**CANNING O'NEILL**  
[canningoneill.com](http://canningoneill.com)  
0161 244 5500

DISCLAIMER: These Particulars are believed to be correct at time of going to Press, but the Developer reserves the right to change the scheme in the future. However, the Vendors/Lessors and Agents of this property give notice that: (1) These Particulars are intended as a general outline only, for the guidance of prospective purchasers or tenants, and do not constitute the whole or any part of an offer or contract. (2) They cannot guarantee the accuracy of any description, dimension or other details contained in these Particulars and prospective purchasers or tenants should not rely on them as statements of fact or representation, but must satisfy themselves as to the accuracy of such details. (3) No employee of the Agents has any authority to make or give any representation or warranty, or enter into any contract whatsoever in relation to the property. (0717)