

Birchwood House



DESCRIPTION

Totalling 16,039 sq ft over two floors, the property can offer 7,815 sq ft on the ground floor or 8,224 sq ft on the first floor with a category A fit-out finished as standard prior to occupation.

GROUND & FIRST FLOOR

GROUND FLOOR	7,815 SQ FT	726 SQ M
FIRST FLOOR	8,224 SQ FT	764 SQ M
TOTAL	16,039 SQ FT	1,490 SQ M

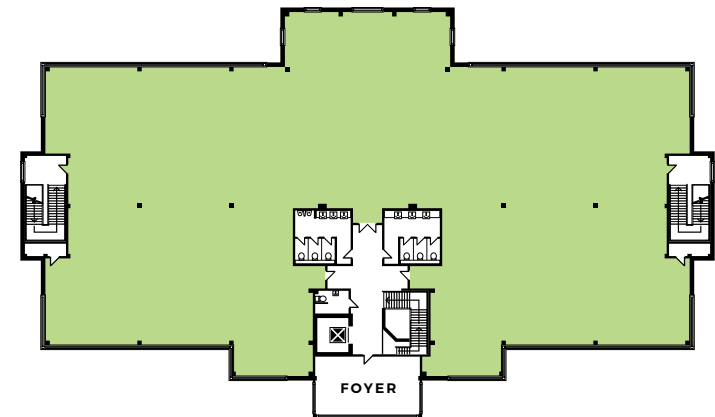
For full details call us on
01625 588 200 or email
orbit@emerson.co.uk

orbit-developments.co.uk
tytheringtonbusinessvillage.co.uk

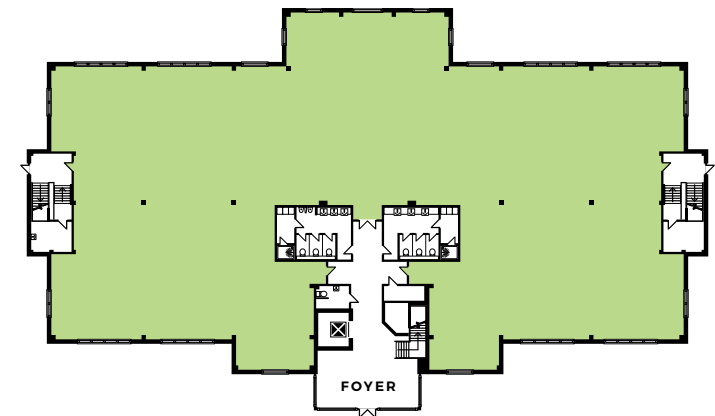
DISCLAIMER: These Particulars are believed to be correct at time of going to Press, but the Developer reserves the right to change the scheme in the future. However, the Vendors/Lessors and Agents of this property give notice that: (1) These Particulars are intended as a general outline only, for the guidance of prospective purchasers or tenants, and do not constitute the whole or any part of an offer or contract. (2) They cannot guarantee the accuracy of any description, dimension or other details contained in these Particulars and prospective purchasers or tenants should not rely on them as statements of fact or representation, but must satisfy themselves as to the accuracy of such details. (3) No employee of the Agents has any authority to make or give any representation or warranty, or enter into any contract whatsoever in relation to the property. (4) Prices and rents quoted in these Particulars maybe subject to VAT in addition. June 2018.

FLOOR PLANS

First Floor



Ground Floor



Birchwood House



TYTHERINGTON
BUSINESS
VILLAGE

